

# Getac

Windows®. Life without Walls™.  
Getac recommends Windows 7.

## Empower Your Mission

*Feature-rich Rugged Notebook  
for Any Demanding Environment*

Getac B300  
Fully Rugged Notebook



# B300

Fully Rugged  
Notebook



Long Battery Life



QuadraClear™ Technology



Night Vision



Back Light Keyboard



Fanless

- Industry-leading Getac QuadraClear™ Sunlight Readable Technology: Optional 1400 Nits LCD with Touchscreen
- Ultimate Performance with Intel® Core™ i7 vPro™ Processor
- Up to 11 Hours of Battery Life\*
- MIL-STD-810G Certified and IP65 Certified
- MIL-STD-461F Certified
- Optional Salt Fog Compliance
- Optional Night Vision
- Optional UL1604 Class 1, Division 2, Group A, B, C, D



The B300 is a hard-as-nails road warrior designed to be productive and worry-free mobile computing, and it is fully customizable. It is MIL-STD-810G certified and IP65 certified, boasting: a magnesium alloy case, a shock-protected HDD, vibration and shock resistance, and sealed I/O caps and doors to prevent damage from solid particles and moisture. Equipped with low voltage Intel® Core™ i7-620LM vPro™ processor, B300 offers long battery life up to 11 hours\* for all day work.

The B300 embraces several advanced security features to safeguard important data, including a fingerprint scanner, TPM 1.2, Intel® vPro™ and an optional smart card reader. It also includes comprehensive connectivity options of Bluetooth, WLAN, GPS, and 3G.

B300 features an ultra-bright 13.3" QuadraClear™ sunlight readable display. The elective 1400 nits display solution leads the industry with an unmatched effective contrast ratio that makes the B300 the ideal choice for daylight viewing. The fan-less design of B300 eliminates the risk of failure and reduces down time under critical environments for stable operation.

## I/O Ports



### Back Side

- DC in Jack x1
- USB 2.0 x 1
- Docking connector x 1
- External VGA x 1
- Serial port x 2



### Left Side

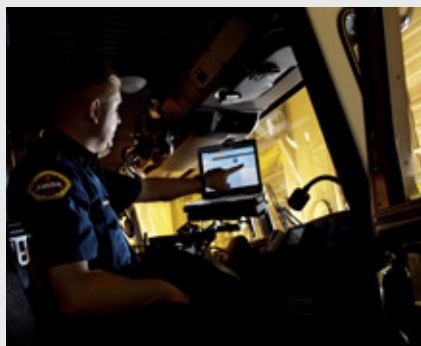
- Battery pack x 1
- Media bay x 1



### Right Side

- HDD drive x 1
- Expansion card slot x 2
- USB 2.0 x 1
- USB 2.0 / eSATA Combo x 1
- HDMI x 1
- IEEE 1394a x 1
- Multi-card reader x 1
- Modem (RJ11) x 1
- LAN (RJ45) x1
- Audio output x 1
- Microphone x 1
- External GPS antenna port (only with optional GPS) x 1

## Industry Applications



### Public Safety

B300 is especially designed for rescuers, firefighters, ambulance crew, and policemen who spend prolonged periods of time inside a vehicle on missions. Unlike other fixed-mount models, its vehicle dock allows easy installation and removal, resulting in greater user mobility. The computer can be easily moved between the office space and the police car, fire truck, or other vehicles. Built-in Wi-Fi and 3G technology enable investigation report uploads and police database access anytime.



### Military

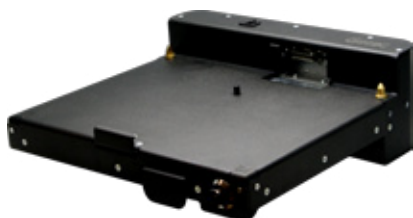
Featuring sunlight readable and night vision display, IP65 certified B300 is highly versatile and customizable to suit any kind of military environment – from battle array simulation in the glaring sunlight, night time shooting training in the wilds, military equipment management and maintenance, to vehicle diagnosis. B300 is a powerful and durable computer custom made for outdoor usage.



### Professional Service

The IP65-certified, drop resistant B300 is a must for ecology scientists or environment surveyors working under various extreme humidity or temperatures. Its optional Salt Fog anticorrosion coating and special mechanical design also makes it ideal for navigation.

## Optional Accessories



### Vehicle Dock

W x D x H: 307.3 x 325.1 x 106.7mm  
(12.1" x 12.8" x 4.2")

- USB 2.0 x 4
- LAN (RJ45) x 1
- Audio output x 1
- Microphone x 1
- DC in Jack x1
- External VGA x 1
- Serial port x 2
- PS/2 x 2



### Office Dock

W x D x H: 329 x 124.8 x 94mm  
(13" x 4.9" x 3.7")

- USB 2.0 x 4
- LAN (RJ45) x 1
- Audio output x 1
- Microphone x 1
- DC in Jack x1
- External VGA x 1
- Serial Port x 2
- PS/2 x 2



Battery Charger



Carrying Bag



2nd HDD



2nd Battery  
(7800mAh)



Vehicle Adapter  
(90W, 11-16VDC  
and 22-32VDC)



MIL-STD-461F  
Certified AC Adapter



Stylus



AC Adapter  
(90W, 100-240VAC)



Main Battery  
(7800mAh)

# Specifications

<b>Operating System</b>	Genuine Windows® 7 Professional Genuine Windows Vista® Business
<b>Mobile Computing Platform</b>	Intel® Core™ i7 vPro™ Technology - Intel® Core i7-620LM vPro™ Processor 2GHz, Max. 2.80GHz with Intel® Turbo Boost Technology - 4MB L3 Intel® Smart Cache - Mobile Intel® QM57 Express chipset
<b>VGA Controller</b>	Intel® Graphics Media Accelerator HD*
<b>Display</b>	13.3" TFT LCD XGA (1024 x768) 700 nits display with optional touchscreen Optional 1400 nits QuadraClear™ sunlight readable display with touchscreen
<b>Storage &amp; Memory</b>	2GB DDR3 expandable to 8GB SATA HDD 250GB Optional SATA SSD 80GB / 160GB
<b>Keyboard</b>	Membrane keyboard Optional LED backlit membrane keyboard Optional LED backlit rubber keyboard
<b>Pointing Device</b>	Touchscreen - Optional pressure sensitive touchscreen Touchpad - Glide touchpad with scroll bar
<b>Expansion Slot</b>	PCMCIA Type II x 1 + ExpressCard/54 x 1 Optional PCMCIA Type II x 1 + smart card reader x 1 Optional ExpressCard/54 x 1 + smart card reader x 1 2-in-1 memory card reader x 1
<b>Multimedia Bay</b>	DVD super multi drive Optional 2nd battery Optional 2nd storage: HDD 250 GB ; SSD 80 / 160 GB
<b>I/O Interface</b>	Serial port (9-pin; D-sub) x 2 External VGA (15-pin; D-sub) x 1 Microphone (Mini-jack) x 1 Audio output (Mini-jack) x 1 DC in Jack x 1 USB 2.0 (4-pin) x 2 USB 2.0 / eSATA Combo x 1 Modem (RJ11) x 1 LAN (RJ45) x 1 IEEE 1394a x 1 HDMI x 1 External GPS antenna port (only with optional GPS) x 1 Docking connector (80-pin) x 1 Optional RF antenna pass-through for WLAN and WWAN

<b>Communication Interface</b>	10/100/1000 base-T Ethernet 56K ITU V.92 modem Intel® Centrino® Ultimate-N 6300; 802.11 a/b/g/n Bluetooth (v2.1+EDR class 2) Optional GPS Optional Gobi™2000 mobile broadband
<b>Software</b>	Getac Utility Adobe® Reader® CompuTrace® Compatible BIOS
<b>Security Feature</b>	Intel® vPro™ Technology TPM 1.2 Fingerprint scanner Optional smart card reader (occupies one PCMCIA type II slot) Kensington lock
<b>Power</b>	AC adapter (90W, 100-240VAC, 50 / 60Hz) Li-Ion smart battery (7800mAh)** Optional Media Bay 2nd Li-Ion smart battery (7800mAh)
<b>Dimension (W x D x H) &amp; Weight</b>	303.5 x 263 x 60 mm (11.9" x 10.35" x 2.36"), 3.5 kg (7.7 lbs)
<b>Rugged Feature</b>	MIL-STD-810G certified and IP65 certified MIL-STD-461F certified*** Optional UL1604 Class 1, Division 2, Group A, B, C, D Full magnesium alloy case Shock-protected removable HDD Vibration & drop resistant Optional salt fog compliance Optional night vision
<b>Environmental Specification</b>	Temperature****: - Operating: -20°C to 60°C / -4°F to 140°F - Storage: -51°C to 71°C / -60°F to 160°F Humidity: - 95% RH, non-condensing

- \* Share memory size may be vary by different operating system and RAM size.
- \*\* Battery life testing conducted under BatteryMark 4.0.1. Battery performance will vary upon software applications, wireless settings, power management settings, LCD brightness, customized modules and environmental conditions. The battery has a limited number of charge cycles and may eventually need to be replaced by a Getac service provider. Battery life and charge cycles vary by use and settings.
- \*\*\* MIL-STD-461F 90W AC adapter sold separately.
- \*\*\*\* Tested by a national independent third party test lab following MIL-STD-810G.



Business Rugged    Semi Rugged    Rugged    Fully Rugged    Ultra Rugged

## Getac EUROPE

Germany Office -  
**Getac Technology GmbH**  
Kanzlerstrasse 4  
40472 Düsseldorf, Germany  
Tel: +49 211 984 8190

## Italy Office

Tel: +39 02 36539562

## UK Office - Getac (UK) Ltd.

Mitac house, Nedge Hill, Telford,  
Shropshire, TF3 3AH, U.K.  
Tel: +44 1952 207 231

## Getac NORTH AMERICA

### USA Office - Getac Inc.

43 Tesla, Irvine, CA 92618, USA  
Toll Free: +1 886 GO GETAC  
(1 886 464 3822)

## Getac ASIA

### China Office - Getac Mobile Ltd.

- **Kunshan Office:**  
Export Processing Zone, 269,  
No.2 Dadao, Changjiang South Rd.,  
Kunshan City, Jiangsu, China  
Tel: +86 512 57382090  
+86 512 57367777 # 5124

### - Shanghai Office:

Room 122, Floor 2,  
No.211 Jiangchang 3rd Rd.,  
Zhabei District, Shanghai, China  
Tel: +86 21 61431188 # 1032  
Fax: +86 21 61401023

### - Beijing Office:

Room 501, Haowei Building,  
No.25 Beitai Pingzhuang Rd.,  
Haidian District, Beijing, China  
Tel: +86 10 62381104  
+86 10 62381108 # 2040

### Japan Office -

### MiTAC Japan Corporation

Yasuda 8th Building 6F,  
Kaigan 3-chome 3-8, Minato-ku,  
Tokyo, 108-0022, Japan  
Tel: +81 3 3769 8311 # 6411

### Taiwan Office -

### Getac Technology Corporation

5F, Building A, No. 209,  
Section 1, Nangang Rd.,  
Nangang Dist., Taipei City,  
11568, Taiwan, R.O.C.  
Tel: +886 2 2785 7888

## SALES CONTACT

**North America**  
ruggedsales@getac.com

**South America**  
sales-getac-SAmerica@getac.com

**EMEA**  
sales-getac-EMEA@getac.com

- **Germany:**  
sales-getac-DACH@getac.com

- **Italy:**  
sales-getac-Italy@getac.com

- **UK:**  
sales-getac-UK@getac.com

**Asia Pacific**  
sales-getac-APAC@getac.com

- **China:**  
sales-getac-China@getac.com

- **Japan:**  
sales-getac-Japan@getac.com

## MARKETING CONTACT

**Global**  
Globalmarketing@getac.com

**North America**  
NorthAmericamarketing@getac.com

**South America**  
SouthAmericamarketing@getac.com

**EMEA**  
EMEAmarketing@getac.com

**Asia Pacific**  
APACmarketing@getac.com

www.getac.com

Copyright © 2010 Getac Technology Corporation and/or any of its affiliates. All Rights Reserved.  
V11M09Y10